



Cambridge International AS & A Level

GEOGRAPHY

9696/42

Paper 4 Advanced Human Geography Options

May/June 2020

INSERT

1 hour 30 minutes

INFORMATION

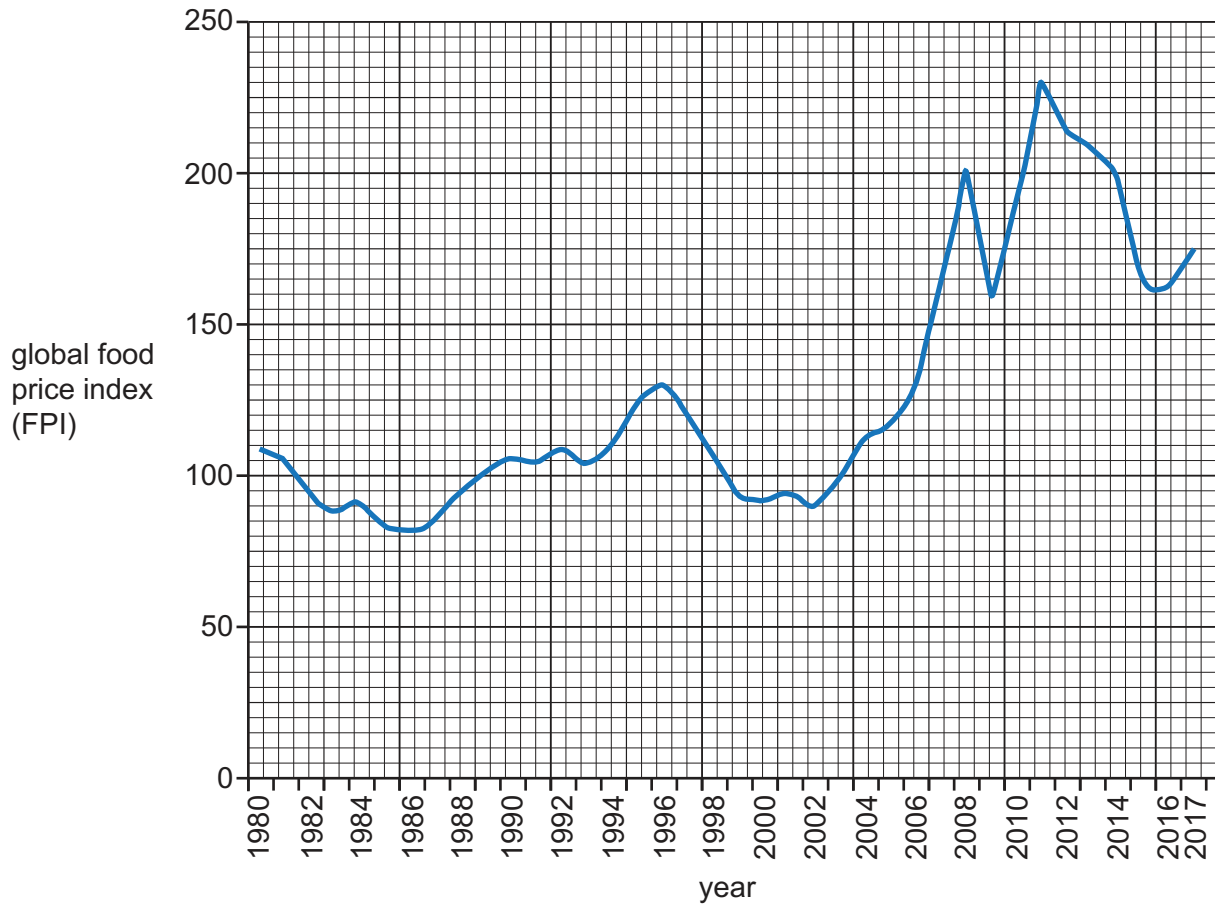
- This insert contains all the resources referred to in the questions.
- You may annotate this insert and use the blank spaces for planning. **Do not write your answers** on the insert.



This document has **8** pages. Blank pages are indicated.

Fig. 1.1 for Question 1

Global food price index (FPI), 1980–2017



The global food price index (FPI) is a measure of the monthly change in international prices of food commodities.

Fig. 4.1 for Question 4

Steel manufacturing

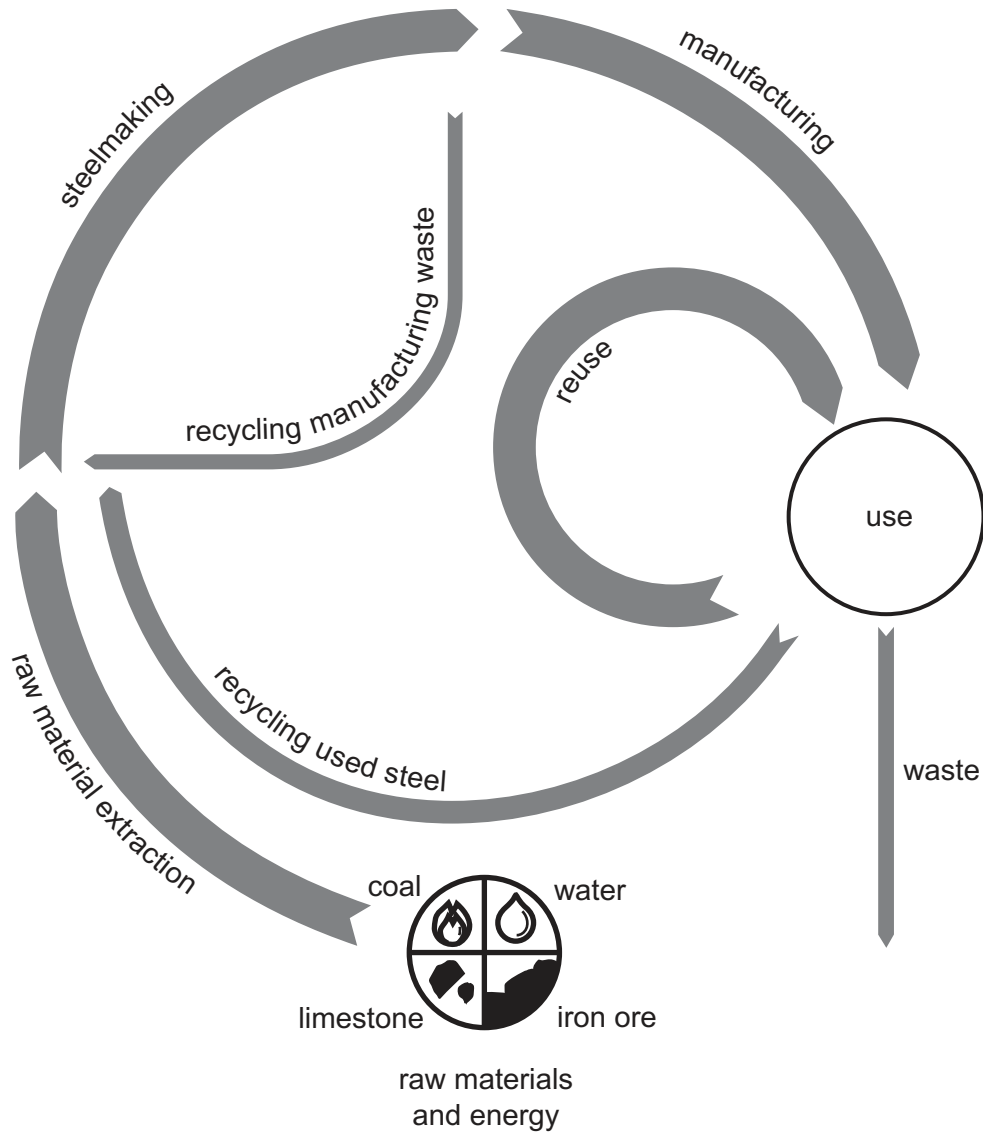


Fig. 7.1 for Question 7
Pulau Messah, a tourist destination in Indonesia, an MIC in Southeast Asia

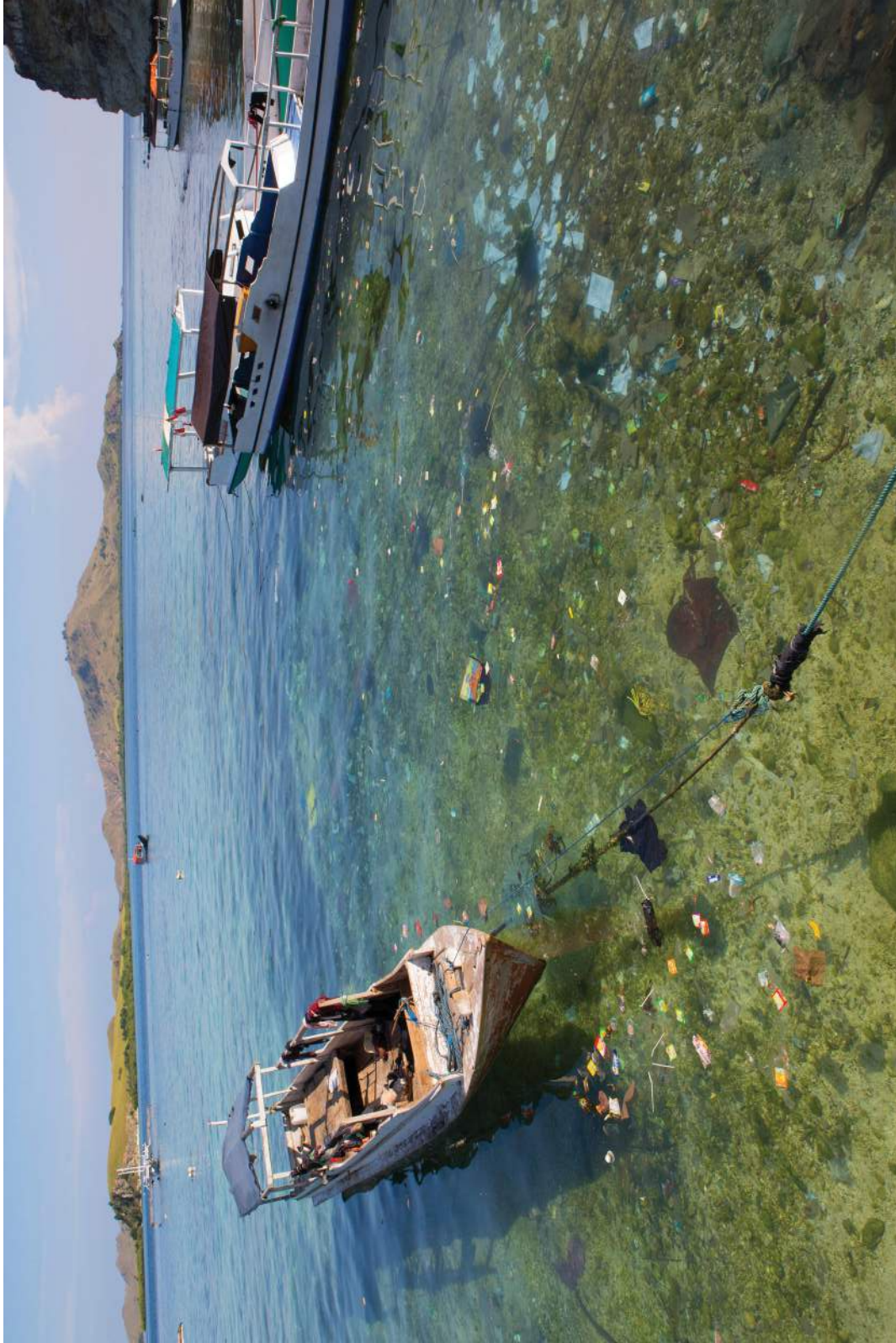
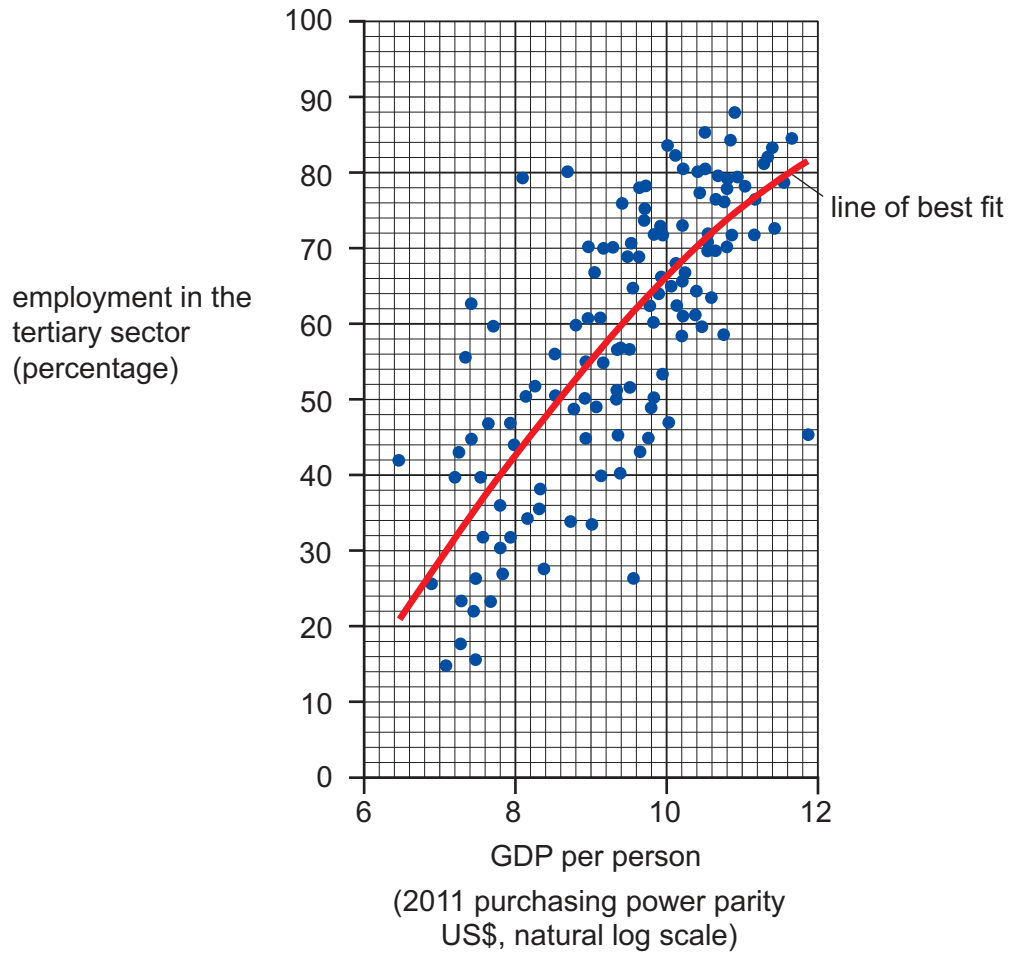


Fig. 10.1 for Question 10

GDP per person and percentage employment in the tertiary sector, by country, 2015



BLANK PAGE

Permission to reproduce items where third-party owned material protected by copyright is included has been sought and cleared where possible. Every reasonable effort has been made by the publisher (UCLES) to trace copyright holders, but if any items requiring clearance have unwittingly been included, the publisher will be pleased to make amends at the earliest possible opportunity.

To avoid the issue of disclosure of answer-related information to candidates, all copyright acknowledgements are reproduced online in the Cambridge Assessment International Education Copyright Acknowledgements Booklet. This is produced for each series of examinations and is freely available to download at www.cambridgeinternational.org after the live examination series.

Cambridge Assessment International Education is part of the Cambridge Assessment Group. Cambridge Assessment is the brand name of the University of Cambridge Local Examinations Syndicate (UCLES), which itself is a department of the University of Cambridge.